



Experience 4444 steps!

Join the climb up one of the world's longest staircases, 4444 steps, and enjoy a spectacular view of the mountains and fjord.

About Flørli

Flørli is a small, abandoned village in the middle of the Lysefjord. It depended primarily on agriculture until 1916, when the power plant was built. It then turned industrial, maintaining the power production until 1999, when the power plant was fully automated. A new power plant was built, several hundred meters into the mountain. The old plant now serves as a studio and art gallery during the summer months, for invited artists.



The tour

Assembly at 7:10 by the campground reception, boat departure at 7:20 and arrival at Flørli 7:50. The stair mount starts easy, as we follow the piping from the old power plant. On the way we'll have a stop for some local history, to inspire the further climb. At the top there will be a well-deserved break, where we'll enjoy the view, and recharge with our packed lunch. The downward return is along an old mountain path. In Flørli you will have the opportunity to have a stroll around the old village, pop by the art gallery in the old power plant, and perhaps taste the local pastry in the cafe. The boat returns at 15:05, arriving in Lysebotn 15:30

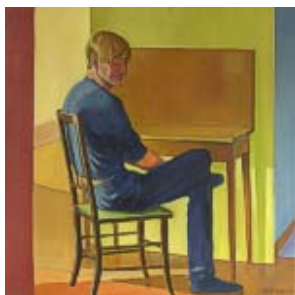


Practical advice

You'll need hiking boots, suitable hiking wear, a small knapsack, a packed lunch and a bottle for water. A reasonable physique is required to accomplish the stair climb.

Price: 250 Kr

Boat fare is additional; a boat pass can be purchased, lasting three days



Departures:

Monday, Wednesday, Friday (weather permitting)